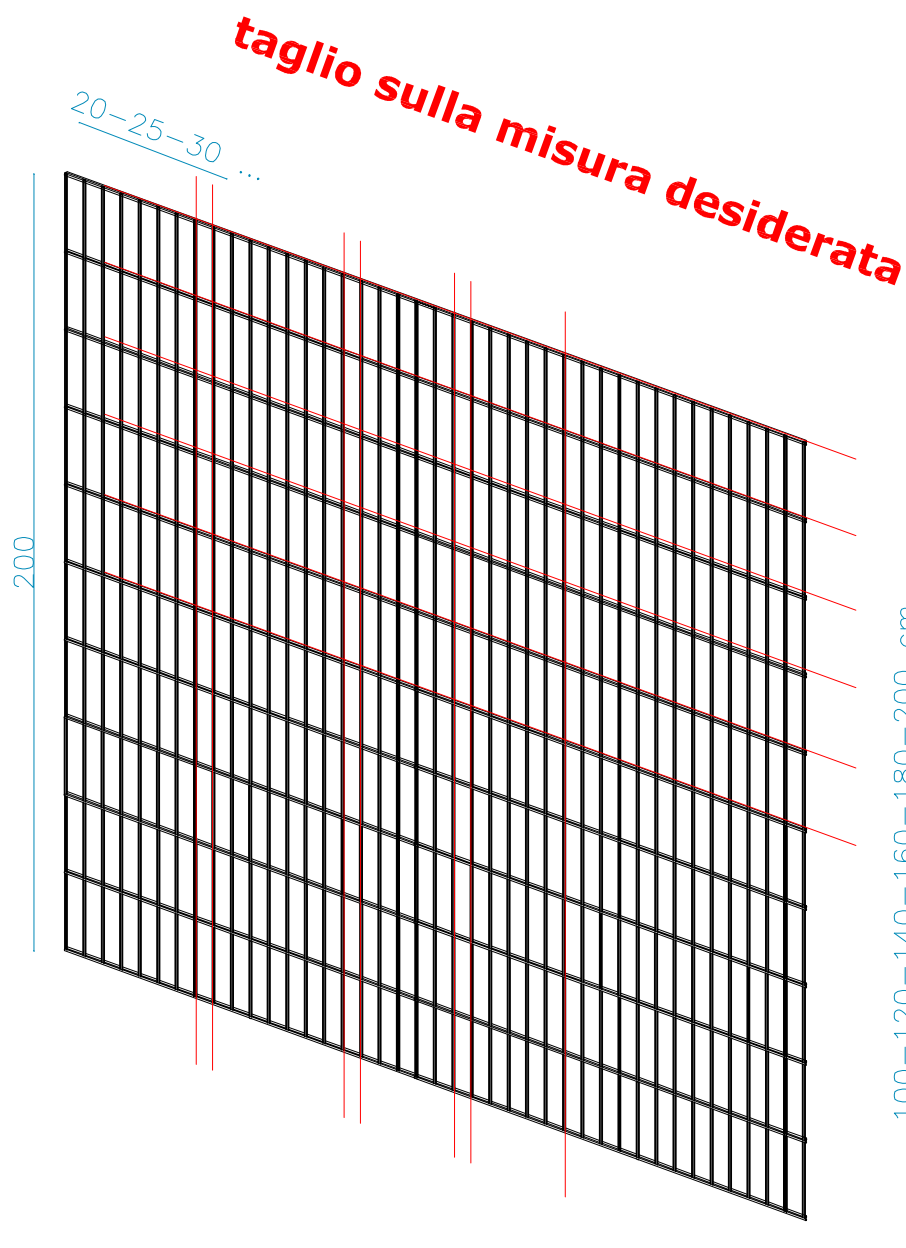
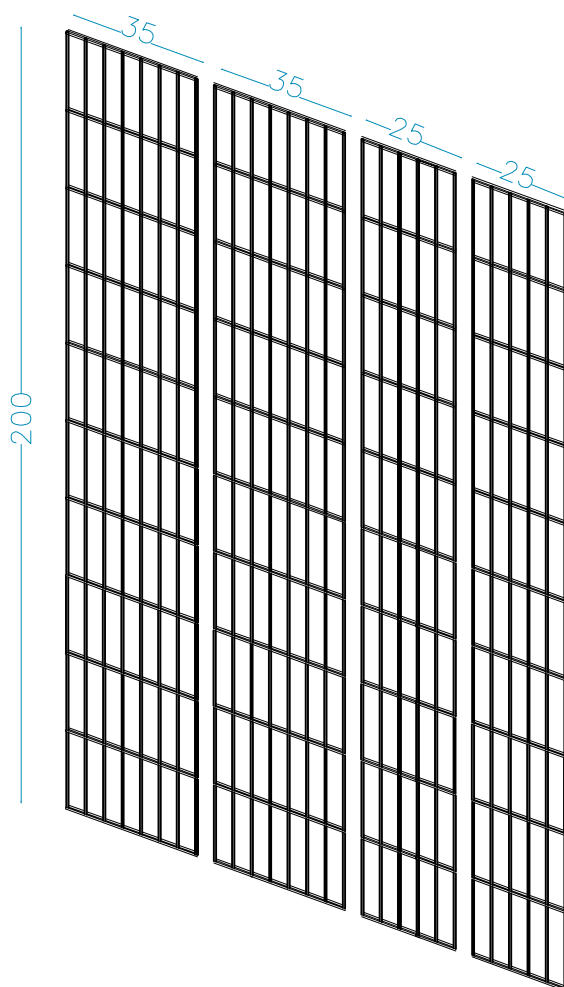
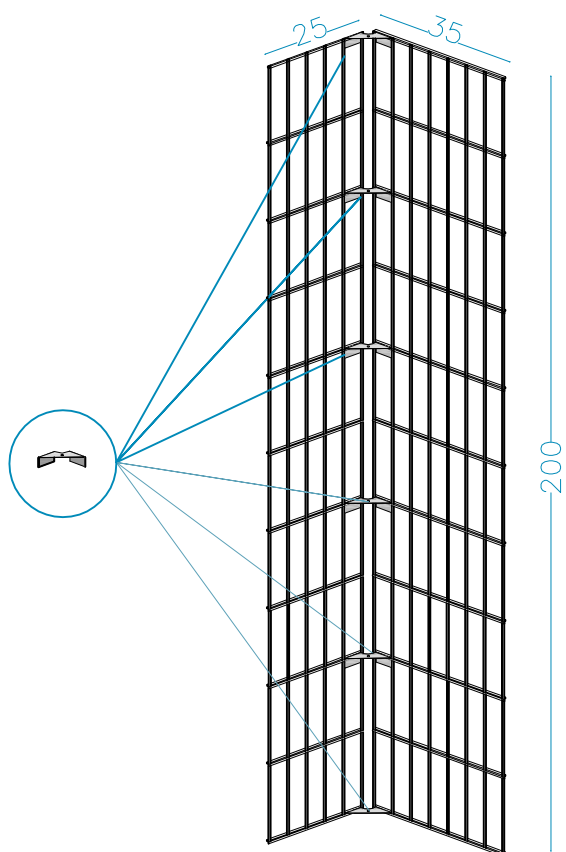


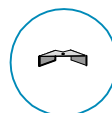
Sistema per COLONNE



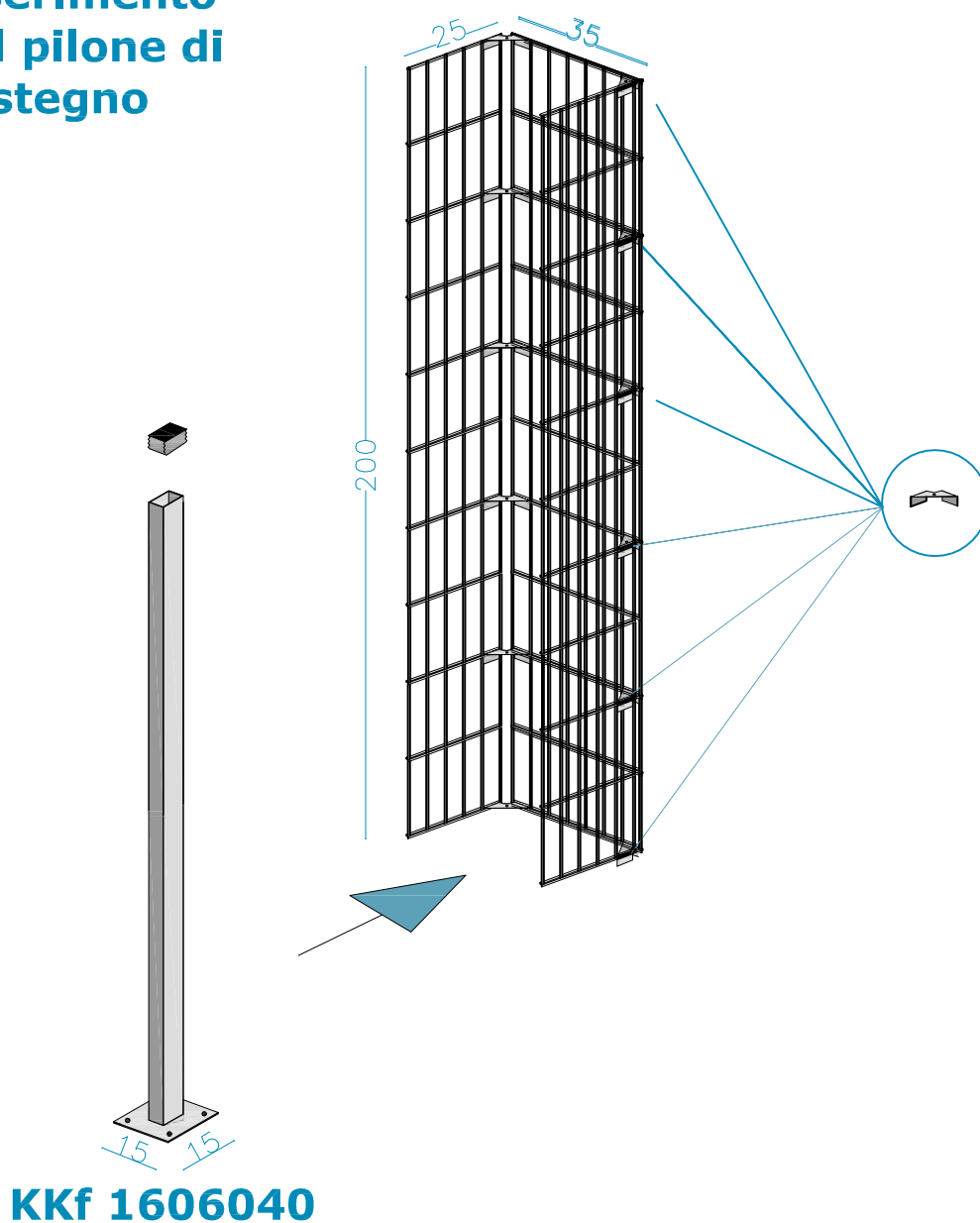
esempio colonna cm 200 x 35 x 25

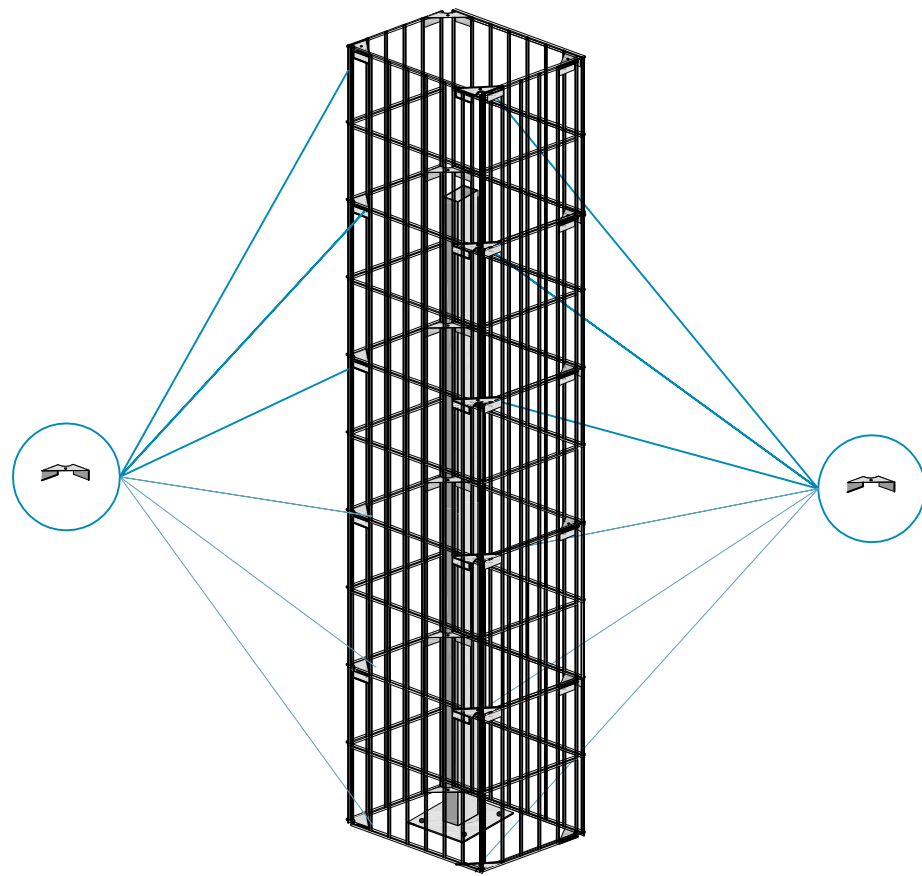


**aggancio dei
pannelli
tramite
angolari
appositi**



**inserimento
del pilone di
sostegno**

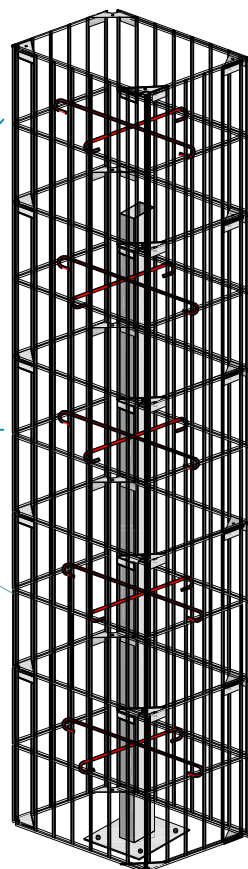


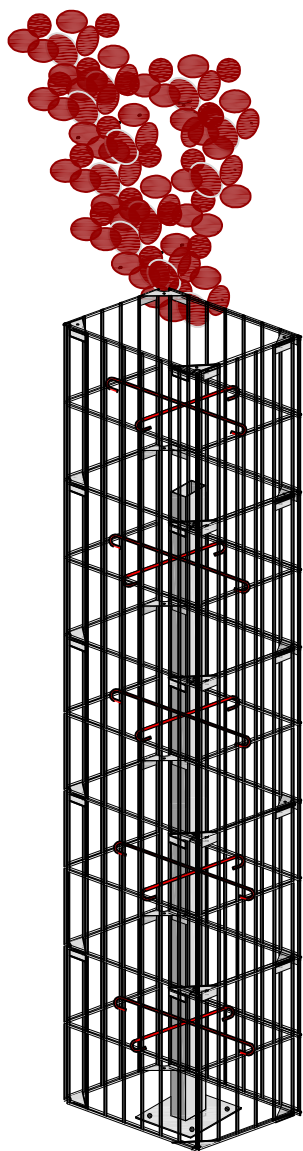


**posizionamento
dei tiranti
interni**

25

35





riempimento
con pietrame

applicare il
coperchio
fissandolo con
gli anelli di
chiusura

